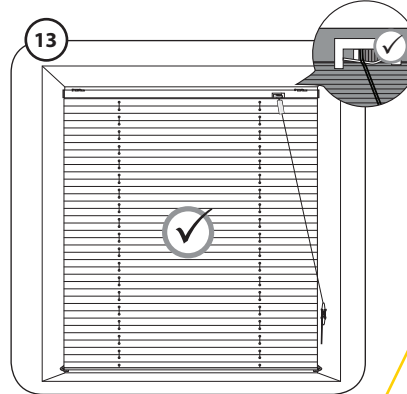
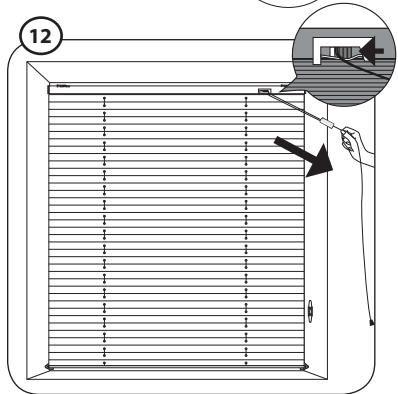
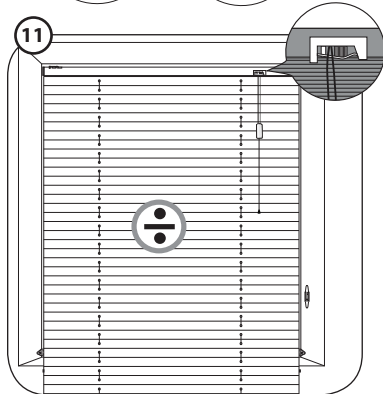
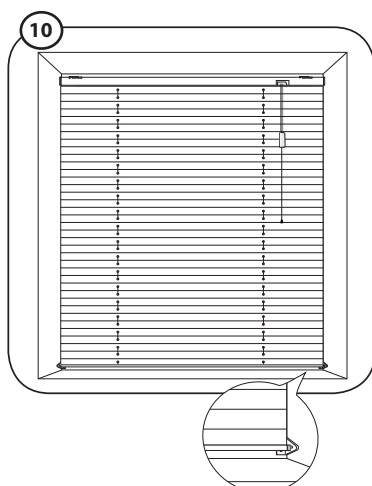
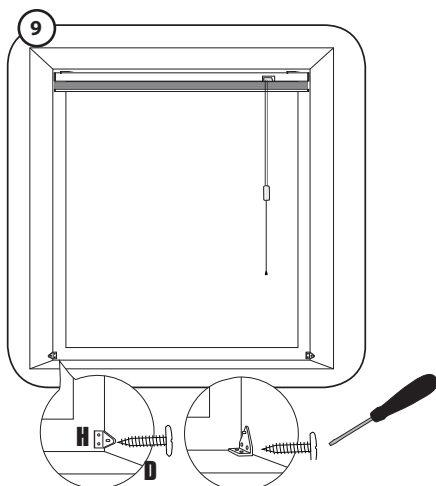
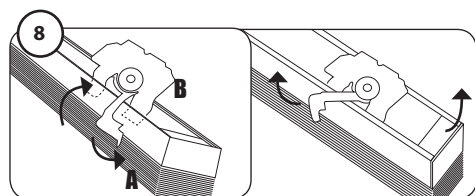
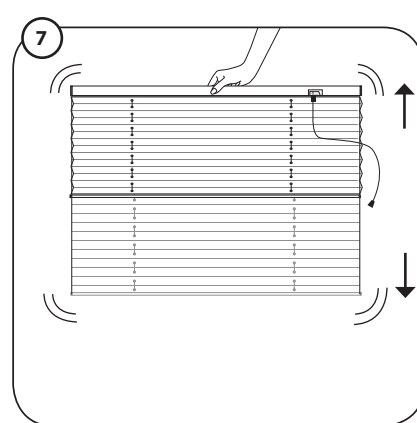
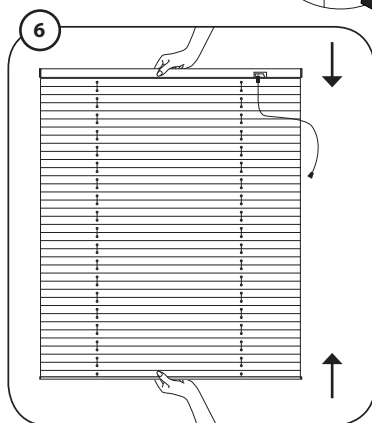
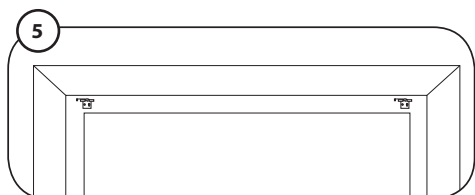
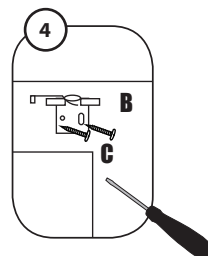
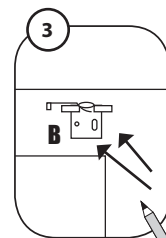
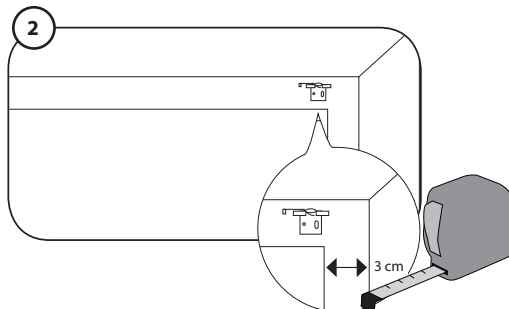
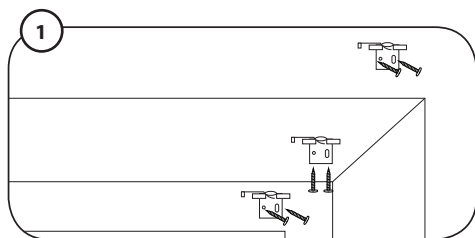




Ax1

Bx2-3 **C**x4-6 **D**x4 **E**x2 **F**x8-10 **G**x1 **H**x2





DK:

NB! Træk dagligt gardinet helt op - det sikrer plisseringernes levetid.

UK:

NB! To ensure the longevity of the pleats, daily pull the blind all the way up.

D:

Bitte Beachten! Das Plisse muss täglich ganz nach oben aufgehoben sein, um die Langlebigkeit der Fäلتung zu gewährleisten.

N:

NB! Trekk daglig plisseen helt opp - dette for å sikre plisseringenes levetid.

S:

OBS! Skjut dagligen upp plissén helt - det säkerställer plisseringens livslängd.

