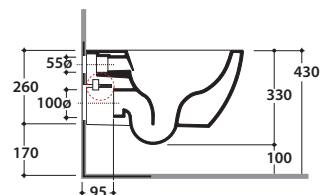
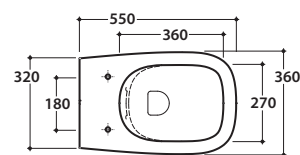
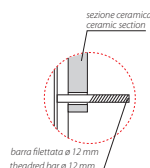


# GENESIS VASO SOSPESO GNS02.BI

CE EN 997:2015

# GLOBO



Effetto antibatterico su ceramica  
**BATAFORM®**  
Ceramic antibacterial effect  
**BATAFORM®**



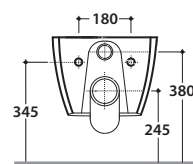
Scarico ottimizzato a 4/2,6 litri  
Drain 4/2,6 lt



Prodotto smaltato con  
**CERASLIDE®**  
Glazed product with  
**CERASLIDE®**

Cod. **GNS02.BI**

Vaso sospeso SENZABRIDA® 55.36 h33 cm. Scarico 4 / 2,6 Lt. Completo di fissaggi. Peso 20 Kg  
Wall-hung Wc No-rim 55.36 h33 cm. Drain 4/2,6 Lt. Fixing kit included. Weight 20 Kg



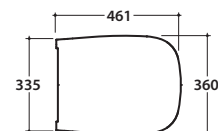
Coprivaso con sistema di  
cerniere a sgancio rapido  
Seat-cover with hinge system  
to quick release



Trattamento antibatterico per sedili in  
versione bianco lucido  
Antibacterial treatment on toilet seats  
in shiny white

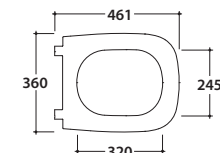
Cod. **GN019BI**

Coprivaso in duroplast con chiusura tradizionale. Peso 3 Kg  
Duroplast seat-cover with traditional closing system. Weight 3 Kg



Cod. **GN020BI**

Coprivaso in duroplast con chiusura rallentata. Peso 3 Kg  
Duroplast seat-cover with soft-closing system. Weight 3 Kg



Cod. **VA132**

Riduttore flusso di scarico.  
Flow reductor.



Cod. **PU001**

Protezione antiurto e acustica.  
Acoustic and crash protection.



Cod. **FI002**

Staffa di fissaggio a "L". Peso 2,5 Kg  
Fixing brackets for W/H sanitary. Weight 2,5 Kg